



NV CANNLABS
FROM ART TO SCIENCE

Certificate of Analysis

Powered by Confident Cannabis

1 of 2

Sweet Goldy

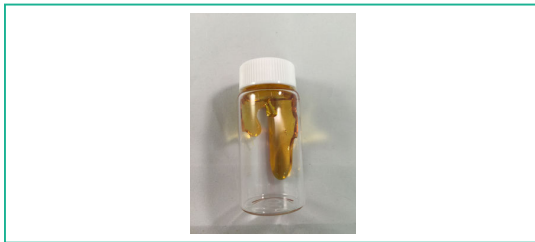
Las Vegas, NV 89118
andy@wvapes.com
(864) 907-1597
Lic. #

Sample: 1802NVC0149-0803

Strain: NA
Batch #: 0033.55CSI-021517; Lot #: 021517
Sample Received: 02/16/2018; Report Created: 02/20/2018

Candyland CSI

Concentrates & Extracts, Other
Harvest Process Lot: ; METRC Batch: ; METRC Sample: 1A4040300001207000000663



The photo on this report is of a sample collected by the lab and may vary from the final packaging

Safety

Not Tested Pesticides	Pass Microbials	Not Tested Mycotoxins
Not Tested Solvents	Not Tested Heavy Metals	Pass Foreign Matter

Cannabinoids

84.301% Total Potential THC	<LOQ Total Potential CBD	3.021% CBN	NT Moisture
---------------------------------------	---------------------------------------	----------------------	-----------------------

Analyte	LOQ	Mass	Mass
	%	%	mg/g
THCa	1.252	<1.252	<12.52
Δ9-THC	1.252	84.301	843.01
CBD	1.252	<1.252	<12.52
CBDa	1.252	<1.252	<12.52
CBC	1.252	<1.252	<12.52
CBG	1.252	2.943	29.43
CBN	1.252	3.021	30.21
THCV	1.252	<1.252	<12.52
Δ8-THC	1.252	<1.252	<12.52
CBGa	1.252	<1.252	<12.52
CBDV	1.252	<1.252	<12.52
Total		90.264	902.64

Total THC = THCa * 0.877 + d9-THC
Total CBD = CBDa * 0.877 + CBD/nTotal i502 Cannabinoids = Total THC + Total CBD
LOQ = Limit of Quantitation; The reported result is based on a sample weight with the applicable moisture content for that sample; Unless otherwise stated all quality control samples performed within specifications established by the Laboratory. Cannabinoids analyzed by SOP-021.

Notes:

Terpenes

Orange	Lavender	Hops
--------	----------	------

Analyte	LOQ	Mass	Mass
	mg/g	mg/g	%
δ-Limonene	0.13	2.21	0.221
Linalool	0.13	2.15	0.215
β-Myrcene	0.13	1.20	0.120
(-) -β-Pinene	0.13	0.31	0.031
α-Pinene	0.13	0.14	0.014
α-Bisabolol	0.13	<0.13	<0.013
α-Humulene	0.13	<0.13	<0.013
α-Terpinene	0.13	<0.13	<0.013
β-Caryophyllene	0.13	<0.13	<0.013
Camphene	0.13	<0.13	<0.013
Caryophyllene Oxide	0.13	<0.13	<0.013
δ-3-Carene	0.13	<0.13	<0.013
γ-Terpinene	0.13	<0.13	<0.013
Geraniol	0.13	<0.13	<0.013
Nerolidol	0.13	<0.13	<0.013
Ocimene	0.13	<0.13	<0.013
(-) -Guaiaol	0.13	<0.13	<0.013
(-) -Isopulegol	0.13	<0.13	<0.013
p-Cymene	0.13	<0.13	<0.013
Terpinolene	0.13	<0.13	<0.013

LOQ = Limit of Quantitation; The reported result is based on a sample weight with the applicable moisture content for that sample; Unless otherwise stated all quality control samples performed within specifications established by the Laboratory. Terpenes analyzed by SOP-022.

6631 Schuster Street
Las Vegas, NV
(702) 826-2700
http://www.nvcann.com

Brenda Perkins

Brenda Perkins
Scientific Operations Director

Confident Cannabis
All Rights Reserved
support@confidentcannabis.com
(866) 506-5866
www.confidentcannabis.com



All pass limits are as specified in NAC 453.A and DPBH Policies. Unless otherwise stated all quality control samples performed within specifications established by the Laboratory. This product has been tested by NV Cann Labs using valid testing methodologies and a quality system as required by Nevada state law. Values reported relate only to the product tested. NV Cann Labs makes no claims as to the efficacy, safety or other risks associated with any detected or non-detected levels of any compounds reported herein. This Certificate shall not be reproduced except in full, without the written approval of NV Cann Labs. Uncertainty information is available upon request.



NV CANNLABS
FROM ART TO SCIENCE

Certificate of Analysis

Powered by Confident Cannabis
2 of 2

Sweet Goldy

Las Vegas, NV 89118
andy@wvapes.com
(864) 907-1597
Lic. #

Sample: 1802NVC0149-0803

Strain: NA
Batch #: 0033.55CSI-021517; Lot #: 021517
Sample Received: 02/16/2018; Report Created: 02/20/2018

Candyland CSI

Concentrates & Extracts, Other
Harvest Process Lot: ; METRC Batch: ; METRC Sample: 1A4040300001207000000663



Pesticides

Not Tested

Analyte	LOQ	Limit	Mass	Status

Microbials

Pass

Analyte	Limit	Mass	Status
	CFU/g	CFU/g	
Aerobic Bacteria	10000	<20	Pass
Bile-Tolerant Gram-Negative Bacteria	100	<20	Pass
Coliforms	100	<20	Pass
E. Coli	1	<1	Pass
Salmonella	1	<1	Pass
Yeast & Mold	1000	<20	Pass

Heavy Metals

Not Tested

Analyte	LOQ	Limit	Mass	Status

Mycotoxins

Not Tested

Analyte	LOQ	Limit	Mass	Status

Foreign Matter Notes:

General Notes:

6631 Schuster Street
Las Vegas, NV
(702) 826-2700
<http://www.nvcann.com>

Brenda Perkins
Scientific Operations Director

Confident Cannabis
All Rights Reserved
support@confidentcannabis.com
(866) 506-5866
www.confidentcannabis.com



All pass limits are as specified in NAC 453.A and DPBH Policies. Unless otherwise stated all quality control samples performed within specifications established by the Laboratory. This product has been tested by NV Cann Labs using valid testing methodologies and a quality system as required by Nevada state law. Values reported relate only to the product tested. NV Cann Labs makes no claims as to the efficacy, safety or other risks associated with any detected or non-detected levels of any compounds reported herein. This Certificate shall not be reproduced except in full, without the written approval of NV Cann Labs. Uncertainty information is available upon request.



NV CANNLABS
FROM ART TO SCIENCE

Certificate of Analysis

Amended

Powered by Confident Cannabis

1 of 2

Sweet Goldy

Las Vegas, NV 89118
andy@wvapes.com
(864) 907-1597
Lic. #

Sample: 1803NVC0293-1564

Strain: NA

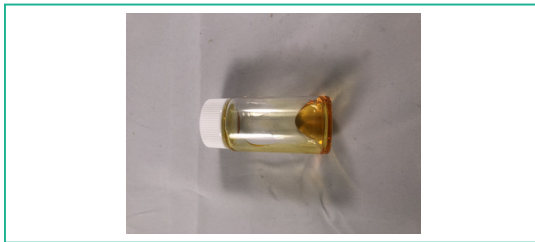
Batch #: 032618; Lot #: 0055CS2

Sample Received: 03/28/2018; Report Created: 04/06/2018

Candyland

Concentrates & Extracts, Other

Harvest Process Lot: ; METRC Batch: ; METRC Sample: 1A4040300001207000001282



The photo on this report is of a sample collected by the lab and may vary from the final packaging

Safety

Not Tested

Pesticides

Pass

Microbials

Not Tested

Mycotoxins

Not Tested

Solvents

Not Tested

Heavy Metals

Pass

Foreign Matter

Cannabinoids

71.437%

Total Potential
THC

0.159%

Total Potential
CBD

0.600%

CBN

NT

Moisture

Analyte	LOQ	Mass	Mass
	%	%	mg/g
THCa	0.025	0.180	1.80
Δ9-THC	0.025	71.279	712.79
CBD	0.025	0.159	1.59
CBDa	0.025	<0.025	<0.25
CBC	0.025	0.681	6.81
CBG	0.025	1.677	16.77
CBN	0.025	0.600	6.00
THCV	0.025	0.229	2.29
Δ8-THC	0.025	<0.025	<0.25
CBGa	0.025	0.389	3.89
CBDV	0.025	<0.025	<0.25
Total		75.194	751.94

Total THC = THCa * 0.877 + d9-THC
Total CBD = CBDa * 0.877 + CBD/nTotal i502 Cannabinoids = Total THC + Total CBD
LOQ = Limit of Quantitation; The reported result is based on a sample weight with the applicable moisture content for that sample; Unless otherwise stated all quality control samples performed within specifications established by the Laboratory. Cannabinoids analyzed by SOP-021.

Notes: Revision 1: Error found with HPLC, re-run of Cannabinoid potency analyzed by DB Labs

Terpenes



Cinnamon



Orange



Lavender

Analyte	LOQ	Mass	Mass
	mg/g	mg/g	%
β-Caryophyllene	0.16	12.81	1.281
δ-Limonene	0.16	6.07	0.607
Linalool	0.16	4.57	0.457
α-Humulene	0.16	4.53	0.453
β-Myrcene	0.16	3.47	0.347
α-Bisabolol	0.16	1.47	0.147
(-) β-Pinene	0.16	1.09	0.109
Caryophyllene Oxide	0.16	0.67	0.067
α-Pinene	0.16	0.59	0.059
Camphene	0.16	0.33	0.033
α-Terpinene	0.16	<0.16	<0.016
δ-3-Carene	0.16	<0.16	<0.016
γ-Terpinene	0.16	<0.16	<0.016
Geraniol	0.16	<0.16	<0.016
Nerolidol	0.16	<0.16	<0.016
Ocimene	0.16	<0.16	<0.016
(-) Guaiol	0.16	<0.16	<0.016
(-) Isopulegol	0.16	<0.16	<0.016
p-Cymene	0.16	<0.16	<0.016
Terpinolene	0.16	<0.16	<0.016

LOQ = Limit of Quantitation; The reported result is based on a sample weight with the applicable moisture content for that sample; Unless otherwise stated all quality control samples performed within specifications established by the Laboratory. Terpenes analyzed by SOP-022.

6631 Schuster Street
Las Vegas, NV
(702) 826-2700
http://www.nvcann.com

Brenda Perkins

Brenda Perkins
Scientific Operations Director

Confident Cannabis
All Rights Reserved
support@confidentcannabis.com
(866) 506-5866
www.confidentcannabis.com



All pass limits are as specified in NAC 453.A and DPBH Policies. Unless otherwise stated all quality control samples performed within specifications established by the Laboratory. This product has been tested by NV Cann Labs using valid testing methodologies and a quality system as required by Nevada state law. Values reported relate only to the product tested. NV Cann Labs makes no claims as to the efficacy, safety or other risks associated with any detected or non-detected levels of any compounds reported herein. This Certificate shall not be reproduced except in full, without the written approval of NV Cann Labs. Uncertainty information is available upon request.



NV CANNLABS
FROM ART TO SCIENCE

Certificate of Analysis

Amended

Powered by Confident Cannabis

2 of 2

Sweet Goldy

Las Vegas, NV 89118
andy@wvapes.com
(864) 907-1597
Lic. #

Sample: 1803NVC0293-1564

Strain: NA
Batch #: 032618; Lot #: 0055CS2
Sample Received: 03/28/2018; Report Created: 04/06/2018

Candyland

Concentrates & Extracts, Other
Harvest Process Lot: ; METRC Batch: ; METRC Sample: 1A4040300001207000001282



Pesticides Not Tested

Analyte	LOQ	Limit	Mass	Status
Not Tested				

Microbials Pass

Analyte	Limit	Mass	Status
	CFU/g	CFU/g	
Aerobic Bacteria	10000	<20	Pass
Bile-Tolerant Gram-Negative Bacteria	100	<20	Pass
Coliforms	100	<20	Pass
E. Coli	1	<1	Pass
Salmonella	1	<1	Pass
Yeast & Mold	1000	<20	Pass

Heavy Metals Not Tested

Analyte	LOQ	Limit	Mass	Status
Not Tested				

Mycotoxins Not Tested

Analyte	LOQ	Limit	Mass	Status
Not Tested				

Foreign Matter Notes:

General Notes:

6631 Schuster Street
Las Vegas, NV
(702) 826-2700
<http://www.nvcann.com>

Brenda Perkins

Brenda Perkins
Scientific Operations Director

Confident Cannabis
All Rights Reserved
support@confidentcannabis.com
(866) 506-5866
www.confidentcannabis.com



All pass limits are as specified in NAC 453.A and DPBH Policies. Unless otherwise stated all quality control samples performed within specifications established by the Laboratory. This product has been tested by NV Cann Labs using valid testing methodologies and a quality system as required by Nevada state law. Values reported relate only to the product tested. NV Cann Labs makes no claims as to the efficacy, safety or other risks associated with any detected or non-detected levels of any compounds reported herein. This Certificate shall not be reproduced except in full, without the written approval of NV Cann Labs. Uncertainty information is available upon request.